



THE
POWER
TO KNOW.



SAS[®] 9.1.3 Intelligence Platform Single-User

Installation Guide

The correct bibliographic citation for this manual is as follows: SAS Institute Inc. 2005. *SAS® 9.1.3 Intelligence Platform: Single-User Installation Guide*. Cary, NC: SAS Institute Inc.

SAS® 9.1.3 Intelligence Platform: Single-User Installation Guide

Copyright © 2005, SAS Institute Inc., Cary, NC, USA

All rights reserved. Produced in the United States of America.

For a Web download or e-book: Your use of this publication shall be governed by the terms established by the vendor at the time you acquire this publication.

U.S. Government Restricted Rights Notice. Use, duplication, or disclosure of this software and related documentation by the U.S. government is subject to the Agreement with SAS Institute and the restrictions set forth in FAR 52.227-19 Commercial Computer Software-Restricted Rights (June 1987).

SAS Institute Inc., SAS Campus Drive, Cary, North Carolina 27513.

February 2007

SAS Publishing provides a complete selection of books and electronic products to help customers use SAS software to its fullest potential. For more information about our e-books, e-learning products, CDs, and hard-copy books, visit the SAS Publishing Web site at support.sas.com/pubs or call 1-800-727-3228.

SAS® and all other SAS Institute Inc. product or service names are registered trademarks or trademarks of SAS Institute Inc. in the USA and other countries. ® indicates USA registration.

Other brand and product names are registered trademarks or trademarks of their respective companies.

Contents

Chapter 1 \triangle Installing and Configuring SAS Enterprise Guide or SAS Enterprise Miner and Related Software 1

Audience 1

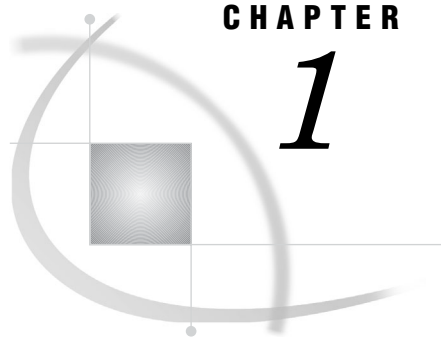
System Requirements 1

If You Have a Previous Copy of SAS Software on This Machine 2

Running the SAS Software Navigator 2

Tips on Reinstalling 9

Running the Configuration Wizard Again 10



CHAPTER

1

Installing and Configuring SAS Enterprise Guide or SAS Enterprise Miner and Related Software

<i>Audience</i>	1
<i>System Requirements</i>	1
<i>If You Have a Previous Copy of SAS Software on This Machine</i>	2
<i>Running the SAS Software Navigator</i>	2
<i>Tips on Reinstalling</i>	9
<i>Running the Configuration Wizard Again</i>	10

Audience

Previously, deployments of SAS Enterprise Guide and SAS Enterprise Miner within the SAS Intelligence Platform were in a multi-user format, as described in the *SAS Intelligence Platform: Installation Guide*. Multiple-user deployments provide for a number of security- and server-based services, but may seem unnecessarily complex to those who don't need such services. Some users have therefore asked for a simpler process by which they can install the software on a number of stand-alone Microsoft Windows machines. The process described in this book is for those users. It supports the following Intelligence Platform servers:

- SAS Metadata Server
- SAS Workspace Server
- SAS Stored Process Server
- SAS Object Spawner

System Requirements

You will need the following to install and execute SAS Enterprise Guide or SAS Enterprise Miner and related software:

Windows version

Windows XP or Windows 2000. Windows XP Home is not sufficient.

Windows user name

The user name must not contain any spaces. The user must be a member of the Administrators group. This user should be created before running the SAS Software Navigator (see the following section).

Windows password

You must declare a password for your user name. The password may not contain more than one \$ character.

Java Runtime Environment (JRE)

You will need the SAS Private Java Runtime Environment installed on your machine. The SAS Software Navigator checks for this JRE and installs it if necessary.

Storage requirements

You will need 400MB available on your hard drive for use by the SAS Software Navigator.

If You Have a Previous Copy of SAS Software on This Machine

The procedures described in this guide will install SAS 9.1.3 software. If you already have a copy of SAS 9.1.x on your machine, these procedures will *write over* the existing installation. If you have a copy of SAS 9.0 or earlier, you can install this software without writing over your existing installation. However, note that during the installation you will be asked if you want to allow the new version to be associated with various file types, such as .sas, .log, and so forth.

Previously installed copies of SAS software can cause problems in the installation process. See “Tips on Reinstalling” on page 9.

Running the SAS Software Navigator

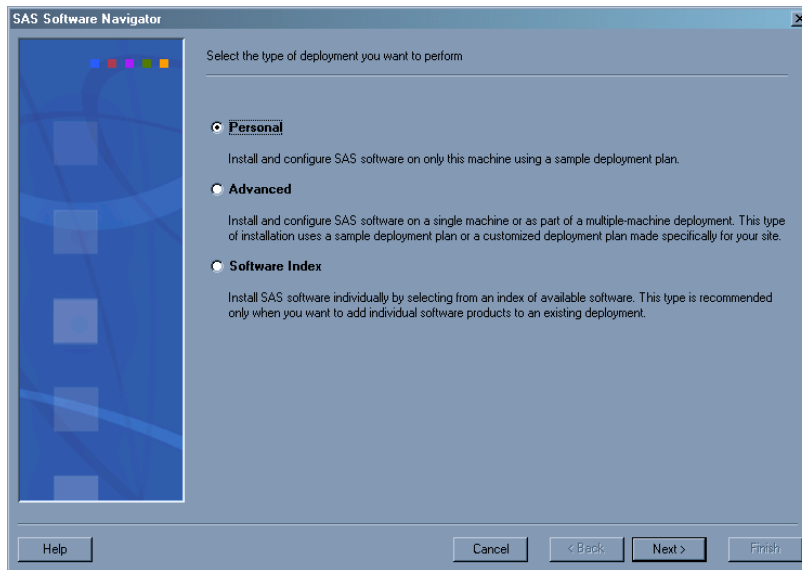
These instructions assume you are installing SAS Enterprise Guide. If you are installing SAS Enterprise Miner, the procedure is similar.

You use the SAS Software Navigator to install SAS software on your machine. This section explains how to run the SAS Software Navigator. It is sometimes advantageous to create a *software depot* from which to install SAS software. That process is described in the *SAS Intelligence Platform: Installation Guide*. These instructions, however, assume you are installing directly from the product CDs.

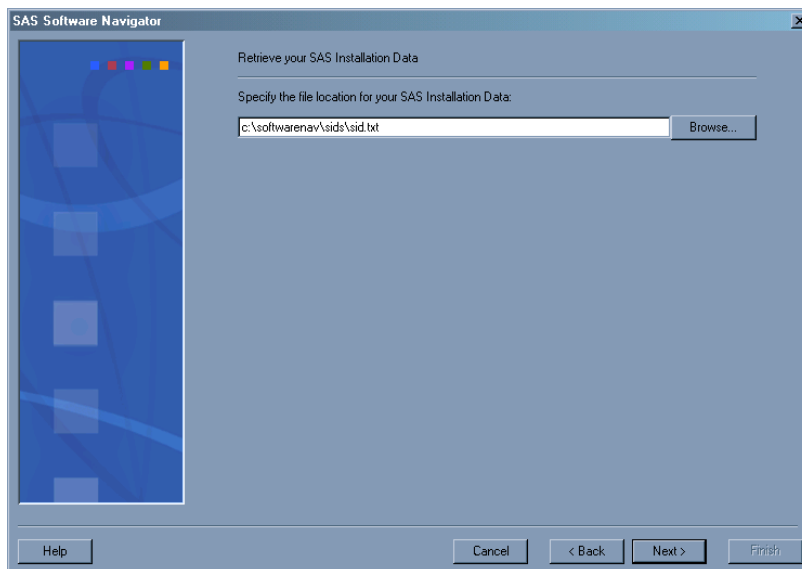
Note: Before running the SAS Software Navigator, create a new SAS Administrator user and password in Windows. Go to **Start** ► **Settings** ► **Control Panel** ► **User Accounts**. Create the user (for example, sasadm) and make sure the user is in the Administrators group. \triangle

Follow these steps to install SAS Enterprise Guide:

- 1 Log on to the machine on which you will be installing the software.
- 2 Remove the SAS Software Navigator CD from your Installation Kit, and place it in your CD drive. The navigator should start automatically and prompt you for a language. If it does not start automatically, find the executable file for the Navigator (**setup.exe**) and open it.
- 3 From the drop-down list, select the language in which you want the SAS Software Navigator to present text. Then click **OK**.
- 4 If you started the SAS Software Navigator from a CD (instead of a software depot), you see a screen that asks whether you want to create a SAS Software Depot or to install software. Select the **Install and configure SAS software** option, and click **Next**. The following screen appears.

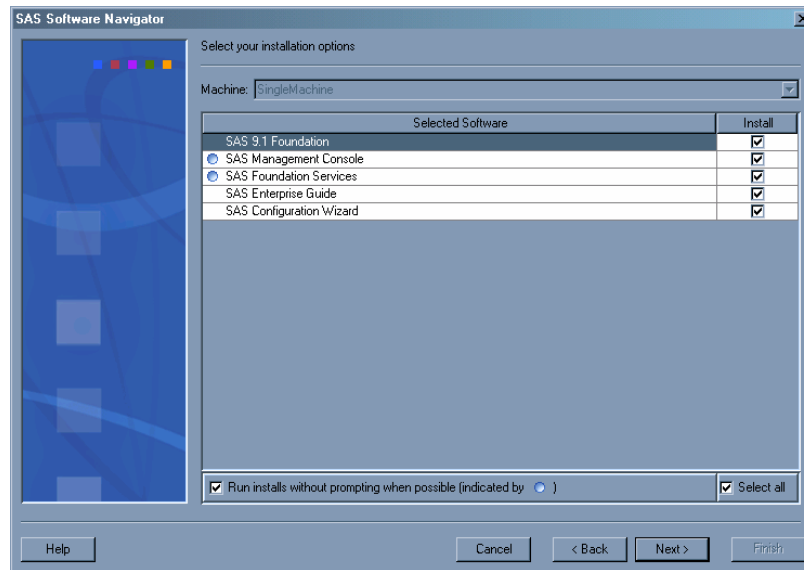


- 5 Select **Personal**, and click **Next**.
- 6 You are prompted for a SAS Installation Data (SID) file, as shown in the following display.



Enter the path to the SID file that you received with your Software Order e-mail. Or click **Browse** to open a file system browser that enables you to navigate to the SID file. Click **Next**.

- 7 You are prompted to verify SAS installation data. Click **Next**.
- 8 You are prompted for a deployment plan. The default should already be entered: "SAS Foundation and Enterprise Guide, one machine." Click **Next**.
- 9 You are asked to select your installation options. Leave everything checked and click **Next**.

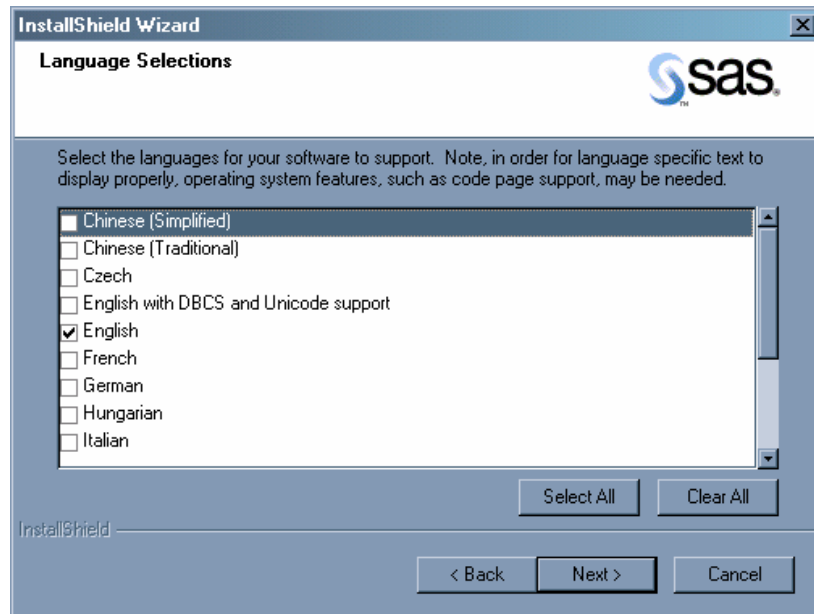


- 10** You are asked to specify the default install path. You can either use the system default location or specify an alternative. Click **Next**.
- 11** You are asked to specify which set of help files to install: for the current language only or for all languages. Make your selection, and then click **Next**.
- 12** You are presented with a list of the software to be installed. After reviewing, click **Next**.

The Software Navigator first runs the System Requirements Wizard to check if your machine has the required software and resources. You may be asked to reboot at this time. If so, once the reboot is complete, the Software Navigator should return to the System Requirements Wizard. If the Wizard determines that you need additional software or resources, a message will appear telling you what is missing and you will be given the opportunity to make the correction. Otherwise, a screen appears telling you no updates are required.

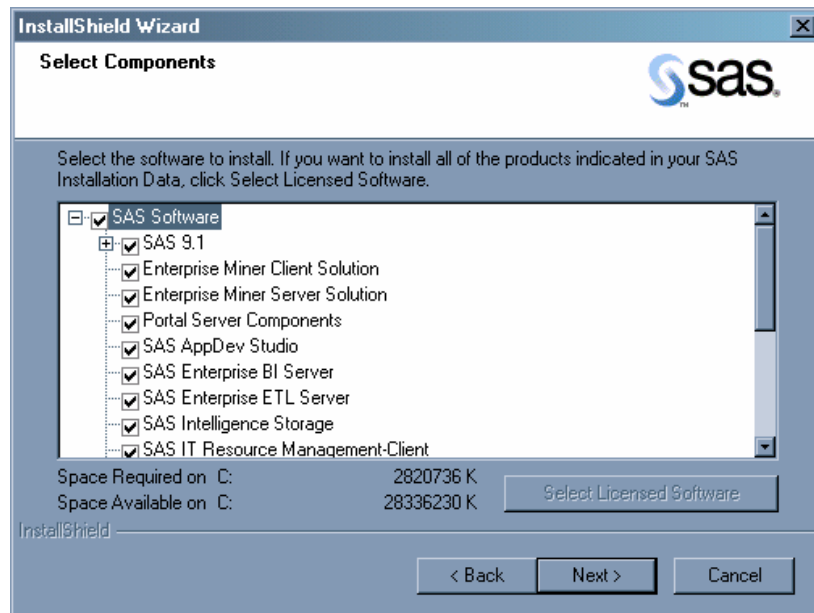
- 13** Click **Finish**.

The Software Navigator begins to install the software. Some software will be installed "silently," that is, without prompting. Other products, such as the SAS Foundation software, are interactive and require input from you. When the SAS Foundation software is being installed, the SAS Setup Wizard runs and prompts you for Language Selections:



Listed on this screen are the languages that the SAS Foundation supports. (You are prompted elsewhere for the language you want the Software Navigator itself to use.)

- 14 Select any additional languages that you want, and then click **Next**.
- 15 The next three screens prompt you for the folders in which to install the SAS Foundation code, data files, and temporary files, respectively. In each case, select the default or choose an alternative, and then click **Next** to go to the next screen.
- 16 Finally, a list of components to install appears. Leave all components checked and click **Next**.



- 17 As the installation of the SAS components continues, especially if a previous version of SAS software has been installed on this machine, you might be prompted one or more times with a message informing you that a filetype (for

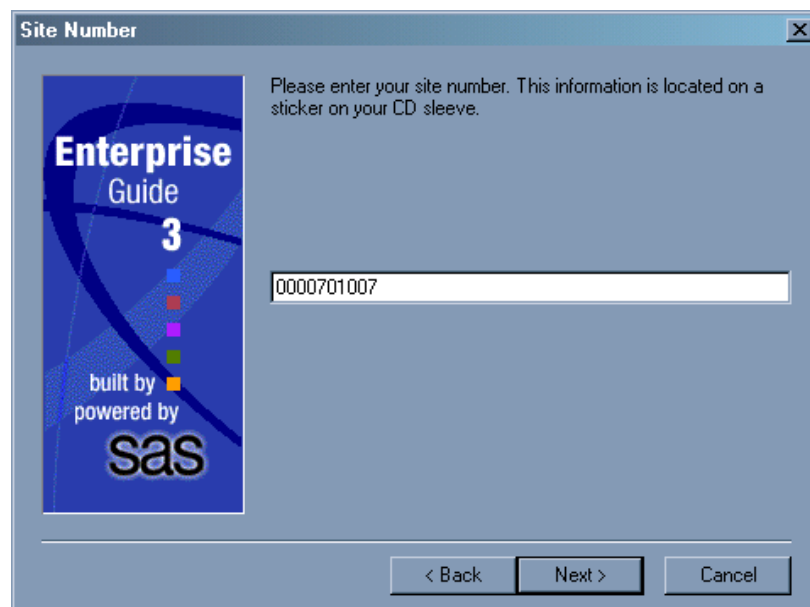
example, BLG) is already in use. You are asked if you want to allow the value of the extension to change. Make sure the box labeled **Use this response for all file types** is checked, and click **Yes**.

- 18 After the SAS Setup Wizard has completed installing all of SAS Foundation, you will see the following screen.

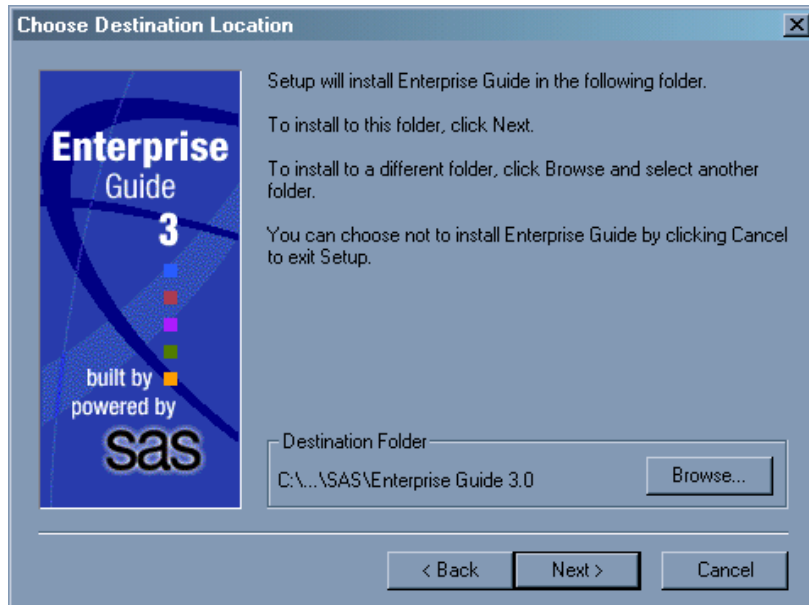


Make sure neither box is checked, and then click **Finish**.

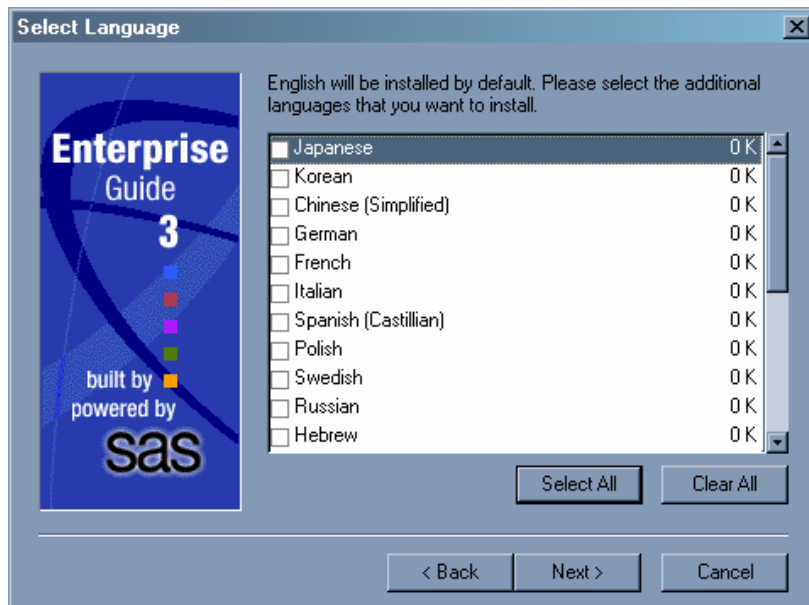
- 19 The installation continues with other applications, some of which are installed silently. When SAS Enterprise Guide (or SAS Enterprise Miner) is installed, it is installed interactively. You are first prompted for your site number. This number is printed on a sticker on the sleeve of your CD. Enter the number and click **Next**.



- 20 You are then asked to select a folder into which the application will be installed. Accept the default or choose another folder, and then click **Next**.



- 21 On the next screen, choose any language in addition to English that you would like to install. Click **Next**.

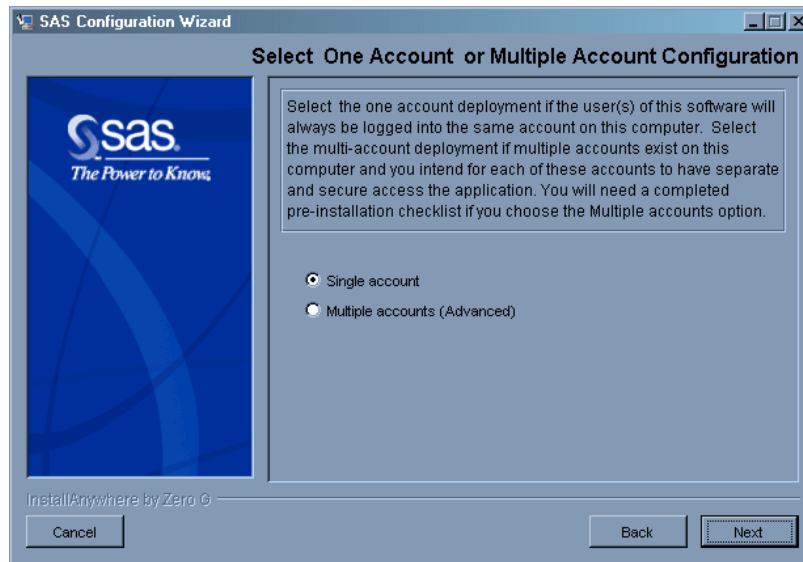


- 22 The next screen asks you to select the following additional options to install:
- Add a shortcut to the desktop
 - Install texture files for charts
 - Install syntax help for SAS language

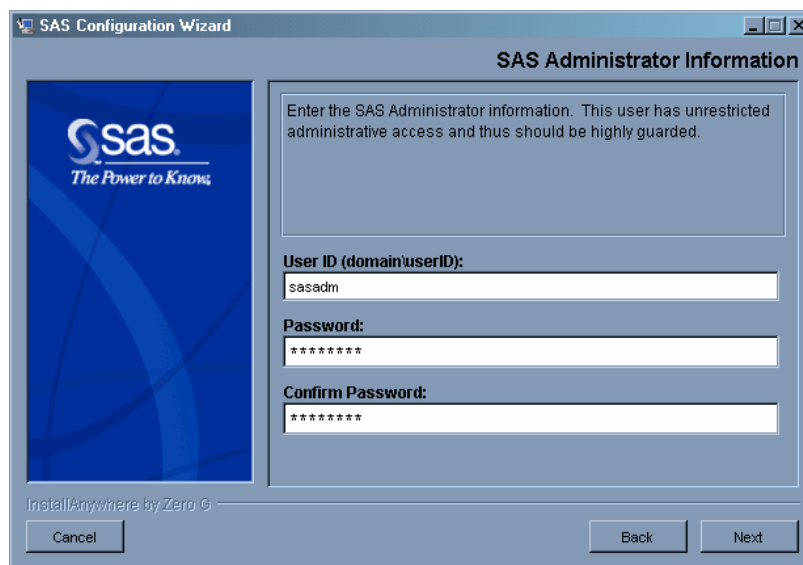
The last two are checked by default. Select the options that you want, and then click **Next**.

- 23 After all applications have been installed, the SAS Configuration Wizard runs. When asked for your language preference for the configuration wizard, you must select **English**. You are then asked to choose the type of configuration that you

want. You can select either **Single Account** or **Multiple Accounts**. Under most circumstances, select **Single Account**. Click **Next**.

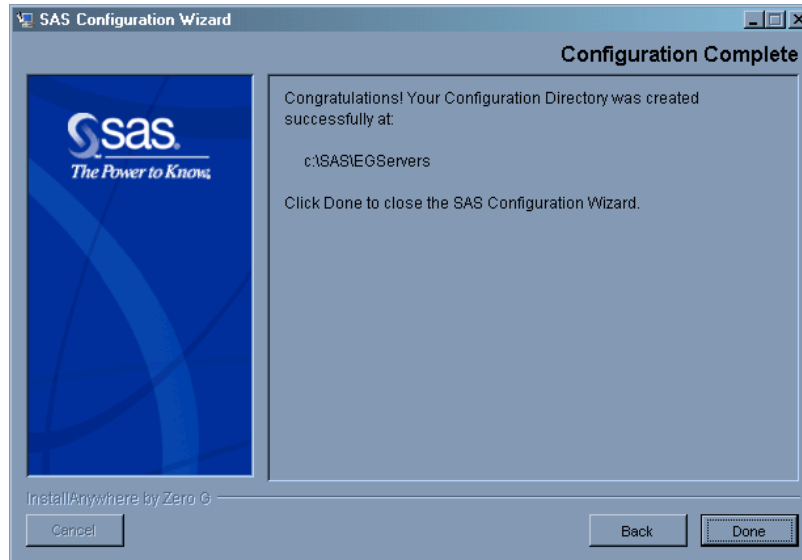


- 24 Next, you are asked to specify a configuration directory for your installation. Select the default directory or browse to an alternative directory. Click **Next**.
- 25 You are then asked for the user name of your SAS Administrator. This is a user name that you have previously created in Windows. The user name must not contain any spaces, and the user must be a member of the Administrators group. Enter the name and password, and click **Next**.



- 26 The next screen prompts you to review your configuration properties and to make any changes. Under ordinary circumstances, accept the properties as they are. Click **Next**.
- 27 Finally you are presented with a configuration summary. After reviewing, click **Finish** to complete the configuration.

When the configuration wizard has completed, the final screen directs you to a short Web page—**instructions.html**—that lists the final manual steps to perform to complete the installation and configuration process. These instructions contain some steps to perform the first time you use SAS Enterprise Guide (or SAS Enterprise Miner), along with a link to online training and some help on what to do when you change your Windows password. At this point, your installation and configuration on this machine are complete.



Tips on Reinstalling

If for any reason you are performing a reinstallation of the software discussed in this guide, you will first need to remove from your machine the previously installed SAS software. Much of this removal process is done through the **Add or Remove Programs** function of the Control Panel, but some steps must be done by hand. Do the following before any reinstallation.

- 1 At **Start ► Settings ► Control Panel ► Administrative Tools ► Services**, find and stop the following services:

SAS Lev1 MS

SAS Lev1 OB

- 2 Delete the services by opening a command prompt and entering, for example:

```
SC delete "SAS Lev1 MS - EGServers"
```

Then enter:

```
SC delete "SAS Lev1 OB - EGServers"
```

- 3 Delete, in the case of SAS Enterprise Guide, the **EGServers** folder from the SAS configuration directory (this folder is usually **C:\SAS\EGServers**).

- 4 Using **Start ► Settings ► Control Panel ► Add or Remove Programs**, remove, in the order given, the following applications:
 - Base SAS software
 - SAS Enterprise Guide
 - SAS Management Console
 - SAS Foundation Services
 - SAS Configuration Wizard
- 5 Reboot your machine and rerun the SAS Software Navigator.

Running the Configuration Wizard Again

To rerun only the Configuration Wizard, without having to reinstall the software, do the following (in the case of SAS Enterprise Miner, for example).

- 1 On the SAS Software Navigator CD, find and select **config1cd/cfgwizard/windows/setup.exe**.
- 2 Choose your language and click **OK**. Click **Next**.
- 3 When prompted to **Specify SAS Project Directory Location**, select **Browse**.
- 4 In the Browse for Folder dialog box, navigate to **softwarenav/sampleplans/EMMin/en**. Click **OK**.
- 5 Select **Single account**. Click **Next**.
- 6 Continue responding to prompts as necessary as the Configuration Wizard runs. When the Wizard finishes, the Enterprise Miner installation is complete.

Your Turn

If you have comments or suggestions about *SAS® 9.1.3 Intelligence Platform: Single-User Installation Guide*, please send them to us on a photocopy of this page or send us electronic mail.

For comments about this book, please return the photocopy to

SAS Publishing
SAS Campus Drive
Cary, NC 27513
E-mail: [**yourturn@sas.com**](mailto:yourturn@sas.com)

For suggestions about the software, please return the photocopy to

SAS Institute Inc.
Technical Support Division
SAS Campus Drive
Cary, NC 27513
E-mail: [**suggest@sas.com**](mailto:suggest@sas.com)

SAS® Publishing gives you the tools to flourish in any environment with SAS®!

Whether you are new to the workforce or an experienced professional, you need to distinguish yourself in this rapidly changing and competitive job market. SAS® Publishing provides you with a wide range of resources—including publications, online training, and software—to help you set yourself apart.

Expand Your Knowledge with Books from SAS® Publishing

SAS® Press offers user-friendly books for all skill levels, covering such topics as univariate and multivariate statistics, linear models, mixed models, fixed effects regression, and more. View our complete catalog and get free access to the latest reference documentation by visiting us online.

support.sas.com/pubs

SAS® Self-Paced e-Learning Puts Training at Your Fingertips

You are in complete control of your learning environment with SAS Self-Paced e-Learning! Gain immediate 24/7 access to SAS training directly from your desktop, using only a standard Web browser. If you do not have SAS installed, you can use SAS® Learning Edition for all Base SAS e-learning.

support.sas.com/selfpaced

Build Your SAS Skills with SAS® Learning Edition

SAS skills are in demand, and hands-on knowledge is vital. SAS users at all levels, from novice to advanced, will appreciate this inexpensive, intuitive, and easy-to-use personal learning version of SAS. With SAS Learning Edition, you have a unique opportunity to gain SAS software experience and propel your career in new and exciting directions.

support.sas.com/LE



**THE
POWER
TO KNOW®**